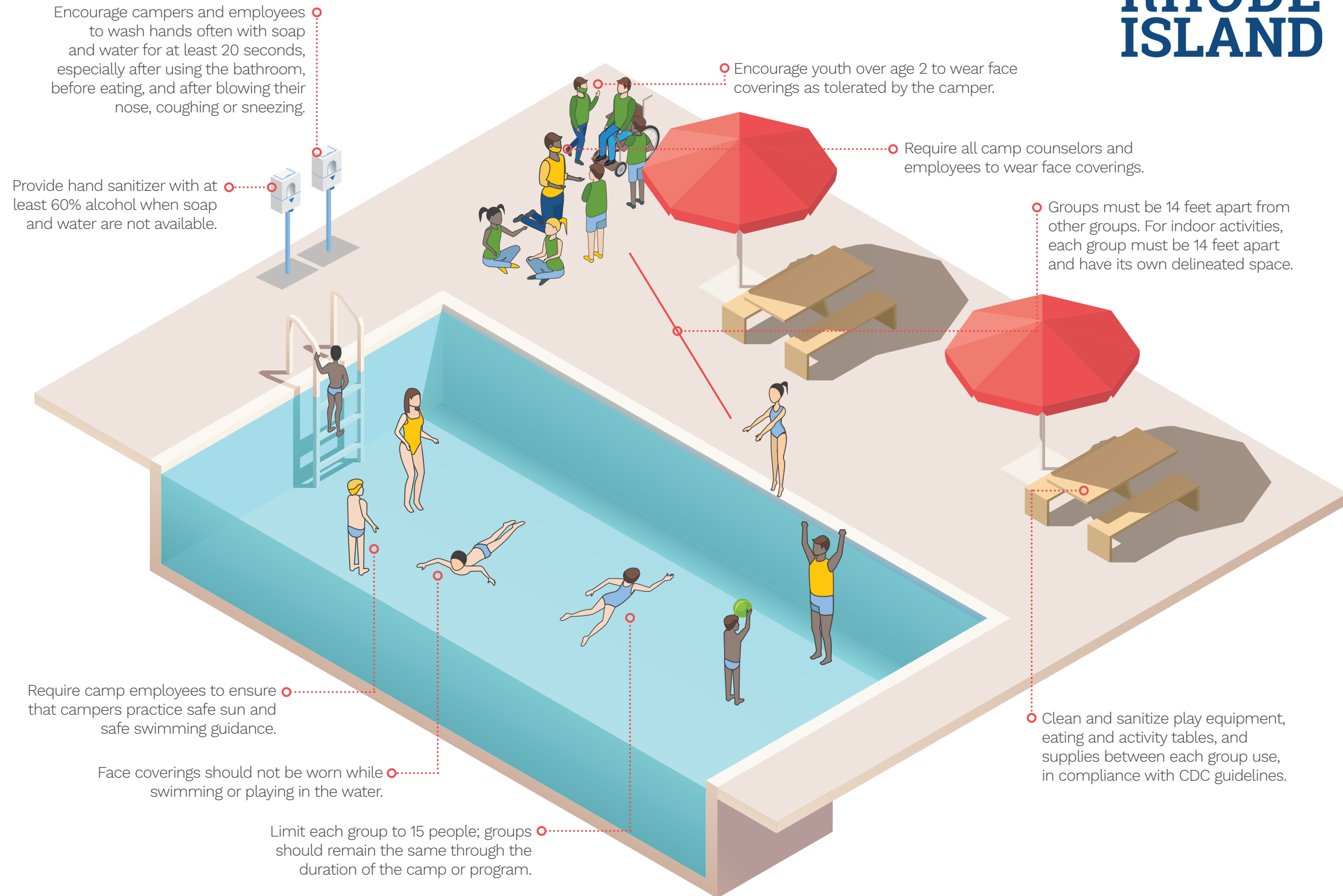


REOPENING RI

Camp: Phase II guidance

This schematic provides an overview of how summer camps should be arranged and operated during the COVID-19 pandemic. Please see the Summer Camps guidance at [ReopeningRI.com](https://reopeningri.com) for more specific details and requirements.

- Establish drop-off and pick-up procedures that adhere to physical distancing guidelines and include screening for staff, families and children upon arrival each day.
- No visitors (including parents) should be allowed on the camp premises.
- Field trips off the camp premises are strongly discouraged.
- Deep clean facilities between camp or programming sessions.



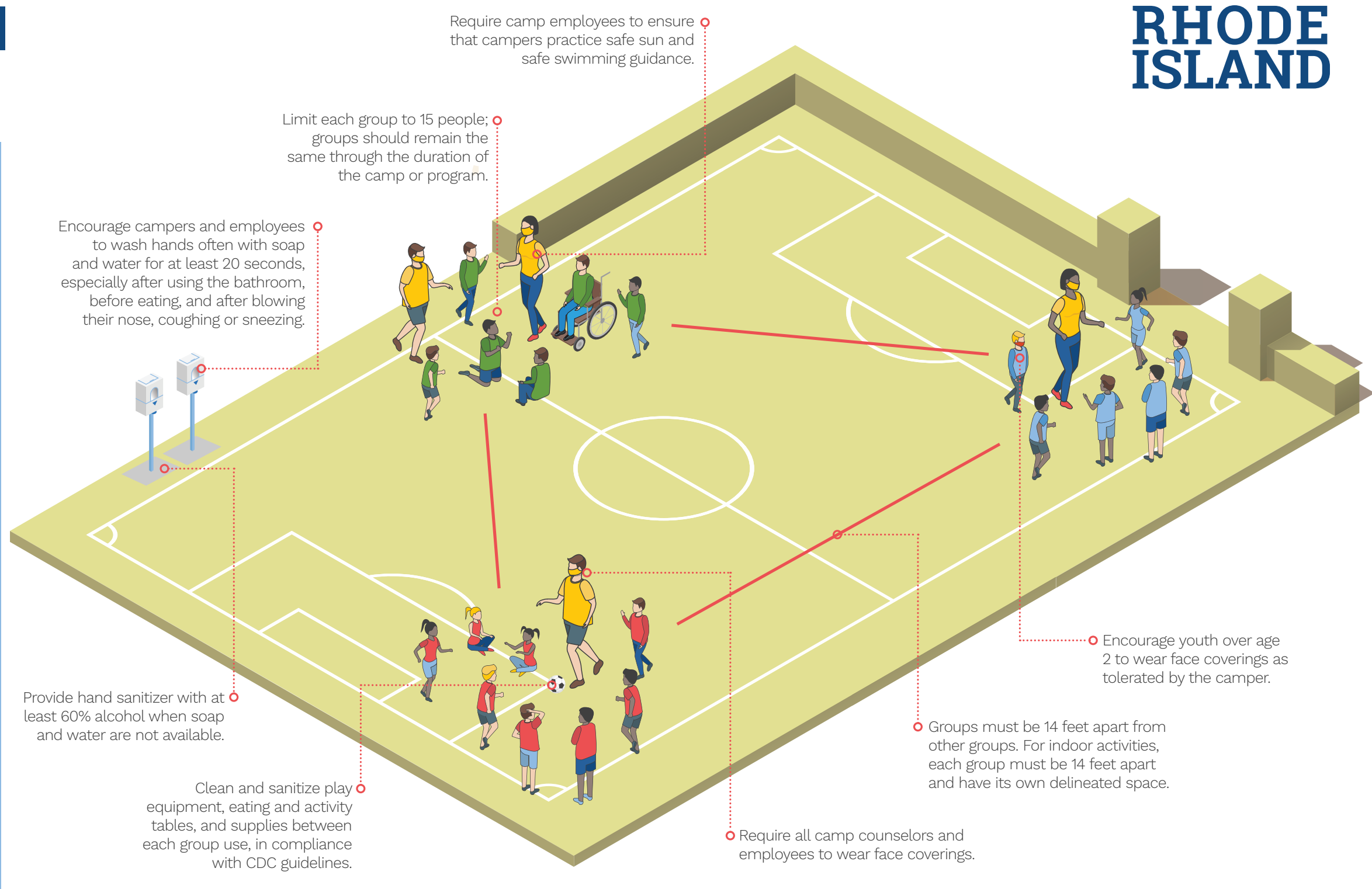
RHODE ISLAND

REOPENING RI

Camp: Phase II guidance

This schematic provides an overview of how summer camps should be arranged and operated during the COVID-19 pandemic. Please see the Summer Camps guidance at [ReopeningRI.com](https://reopeningri.com) for more specific details and requirements.

- Establish drop-off and pick-up procedures that adhere to physical distancing guidelines and include screening for staff, families and children upon arrival each day.
- No visitors (including parents) should be allowed on the camp premises.
- Field trips off the camp premises are strongly discouraged.
- Deep clean facilities between camp or programming sessions.



RHODE ISLAND

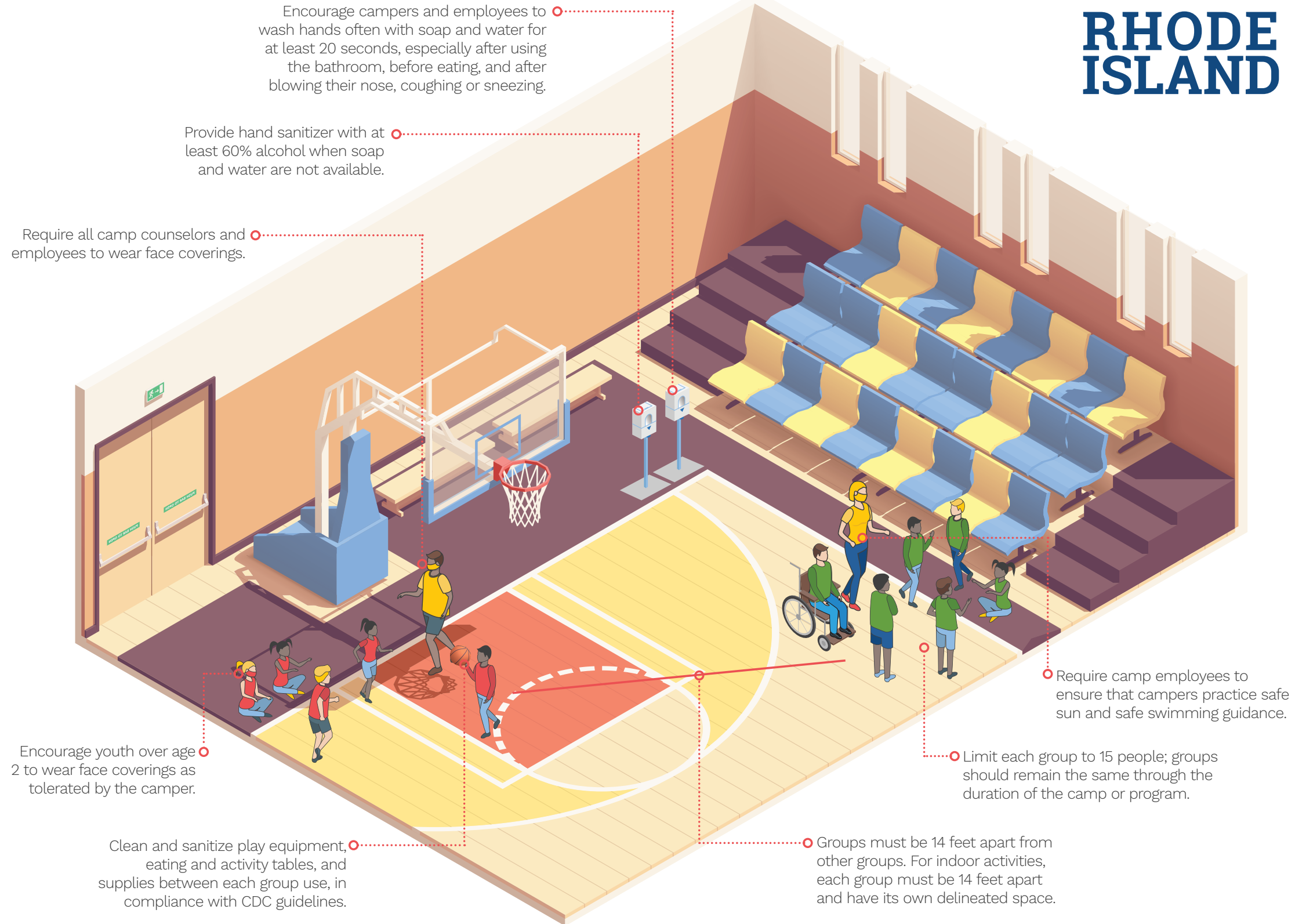
REOPENING RI

Camp: Phase II guidance

This schematic provides an overview of how summer camps should be arranged and operated during the COVID-19 pandemic. Please see the Summer Camps guidance at [ReopeningRI.com](https://reopeningri.com) for more specific details and requirements.

- Establish drop-off and pick-up procedures that adhere to physical distancing guidelines and include screening for staff, families and children upon arrival each day.
- No visitors (including parents) should be allowed on the camp premises.
- Field trips off the camp premises are strongly discouraged.
- Deep clean facilities between camp or programming sessions.

RHODE ISLAND



- Deep clean facilities between camp or programming sessions.