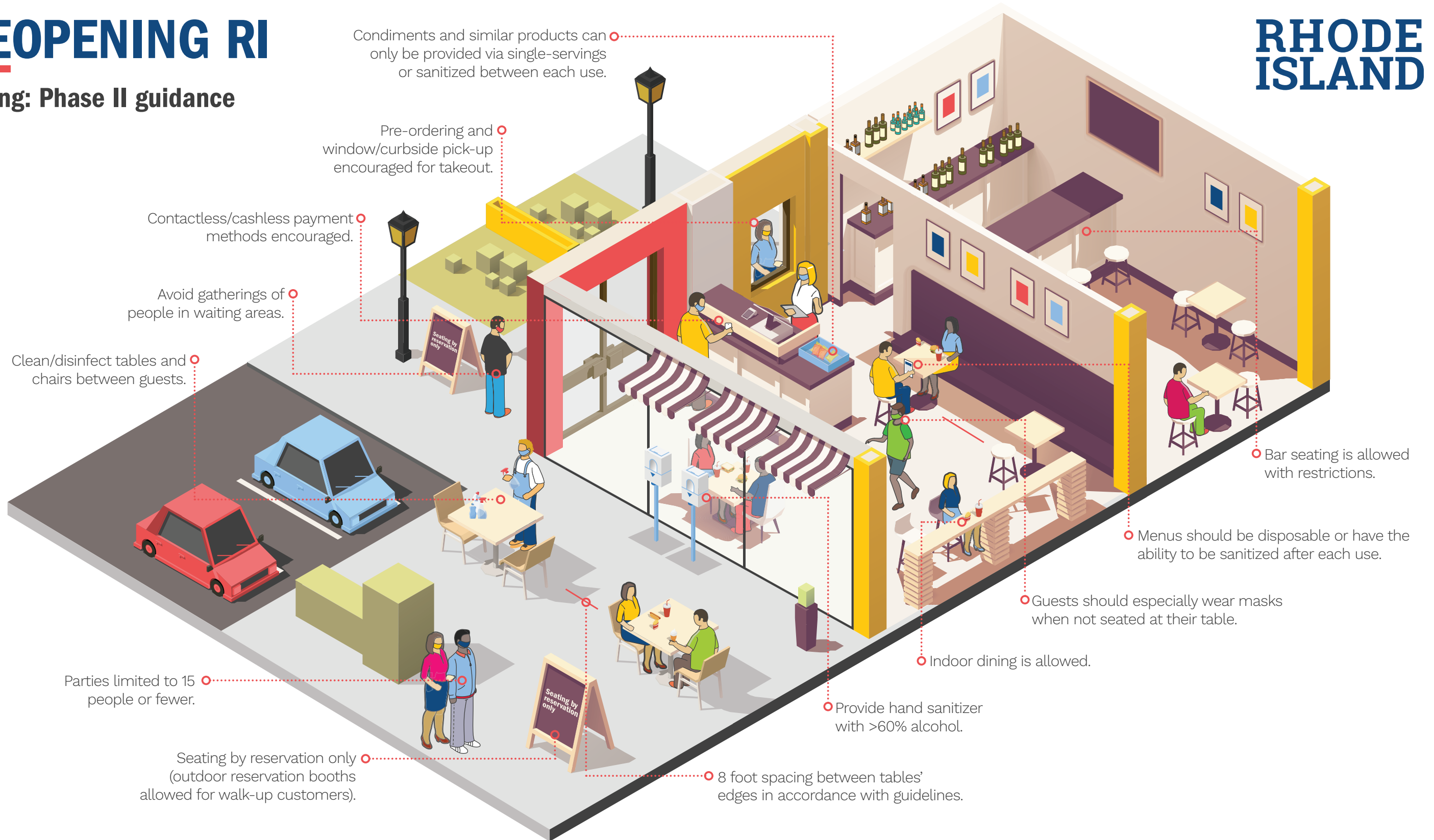


# REOPENING RI

## Dining: Phase II guidance

RHODE ISLAND



Condiments and similar products can only be provided via single-servings or sanitized between each use.

Pre-ordering and window/curbside pick-up encouraged for takeout.

Contactless/cashless payment methods encouraged.

Avoid gatherings of people in waiting areas.

Clean/disinfect tables and chairs between guests.

Parties limited to 15 people or fewer.

Seating by reservation only (outdoor reservation booths allowed for walk-up customers).

8 foot spacing between tables' edges in accordance with guidelines.

Provide hand sanitizer with >60% alcohol.

Indoor dining is allowed.

Guests should especially wear masks when not seated at their table.

Menus should be disposable or have the ability to be sanitized after each use.

Bar seating is allowed with restrictions.